



# *Company Profile*



Tel: 05-3661122

Fax:05-3651122

**Website : [www.nabekin.com](http://www.nabekin.com)**

**WATANABE METAL  
INDUSTRIES SDN.BHD**

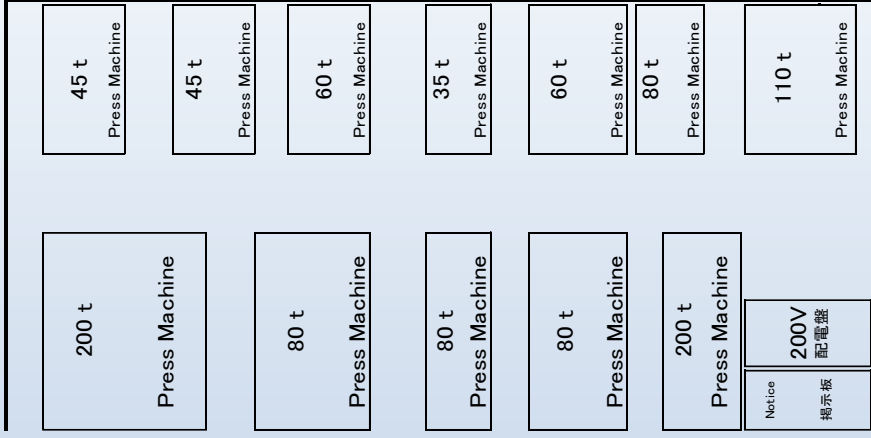
Plot 32 , Lorong Bemban 5 ,  
Bemban Industrial Park,  
31000 Batu Gajah,  
Perak Malaysia.

# COMPANY DETAILS

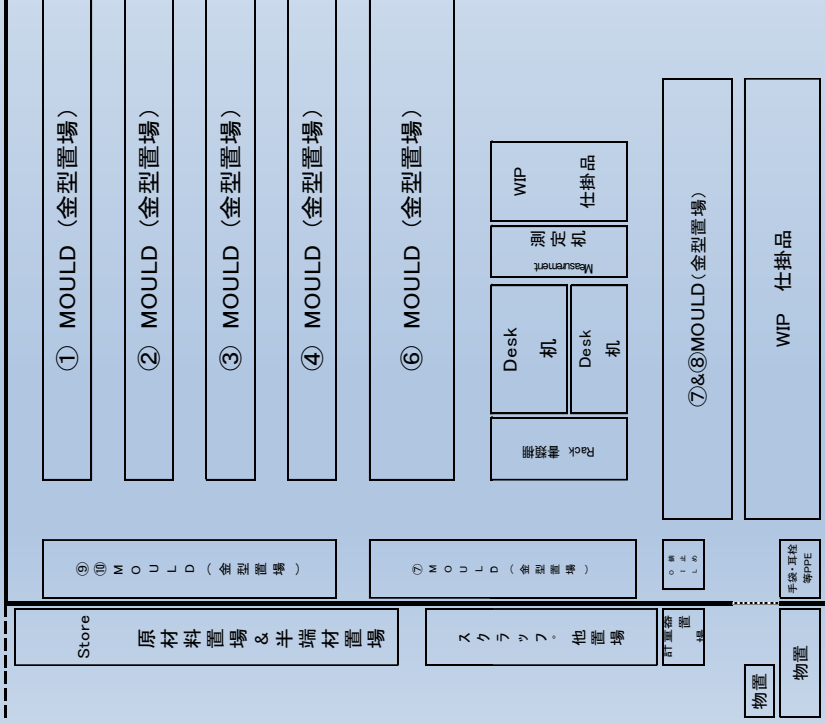
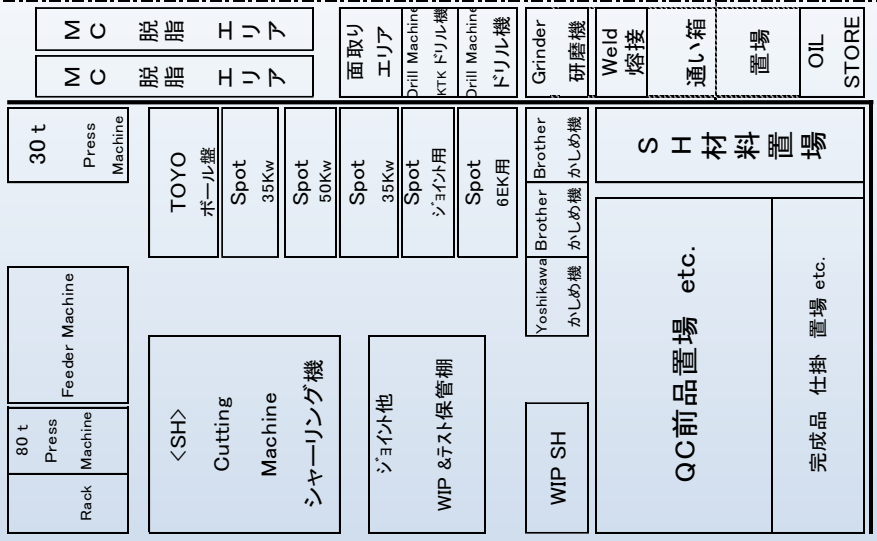
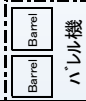


- Establishment > January 2003
- Paid-up Capital > RM 2 Millions
- Land Space > 4,732 m<sup>2</sup>
- Workforce > 33
- Product > Marine and Automotive Engine Parts
- ISO 9001 : 2000 > Certified on 3rd Feb 2006
- ISO 9001 : 2008 > Revision on 30<sup>th</sup> Dec 2009
- ISO 9001 : 2015 > Certified on 30<sup>th</sup> Sept 2020
- Business Operation > Metal Stamping  
> Spot Welding

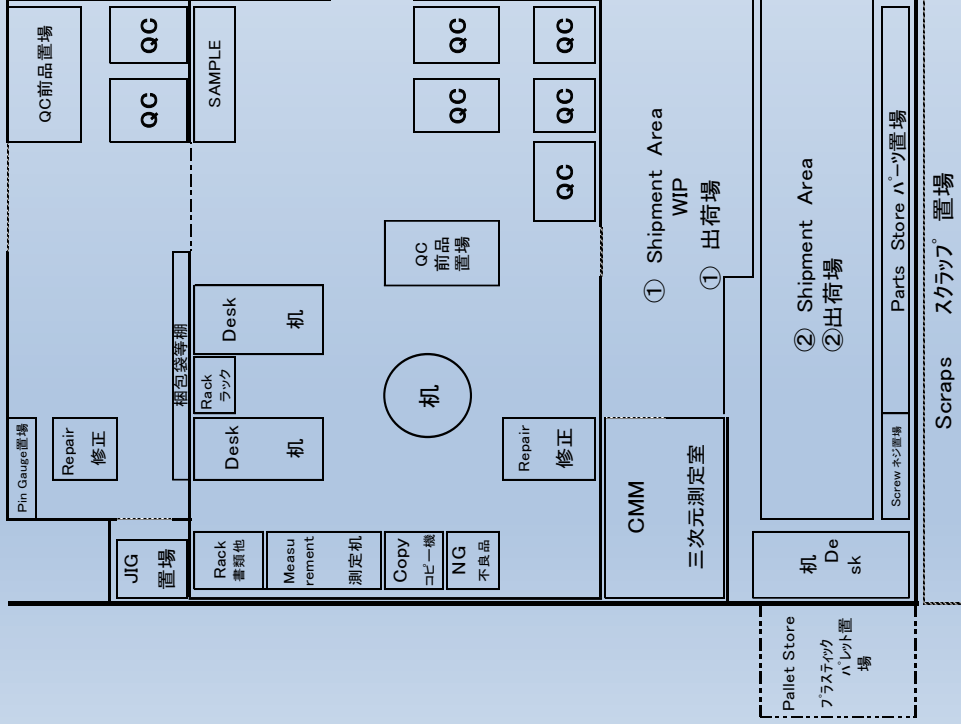
# FACTORY LAYOUT



EXIT



EXIT



EXIT

# QUALITY POLICY



- We are committed to serve our best to meet all the requirements by our customers
- We focus on safety while providing high quality products and on time delivery services to our customers
- All employees are responsible to participate in continuous effort to improve the quality of products and services to our customers
- We shall comply with and meet all the Government regulations

渡辺 みち子

Watanabe Michiko  
(Managing Director)

# SAFETY AND HEALTH POLICIES

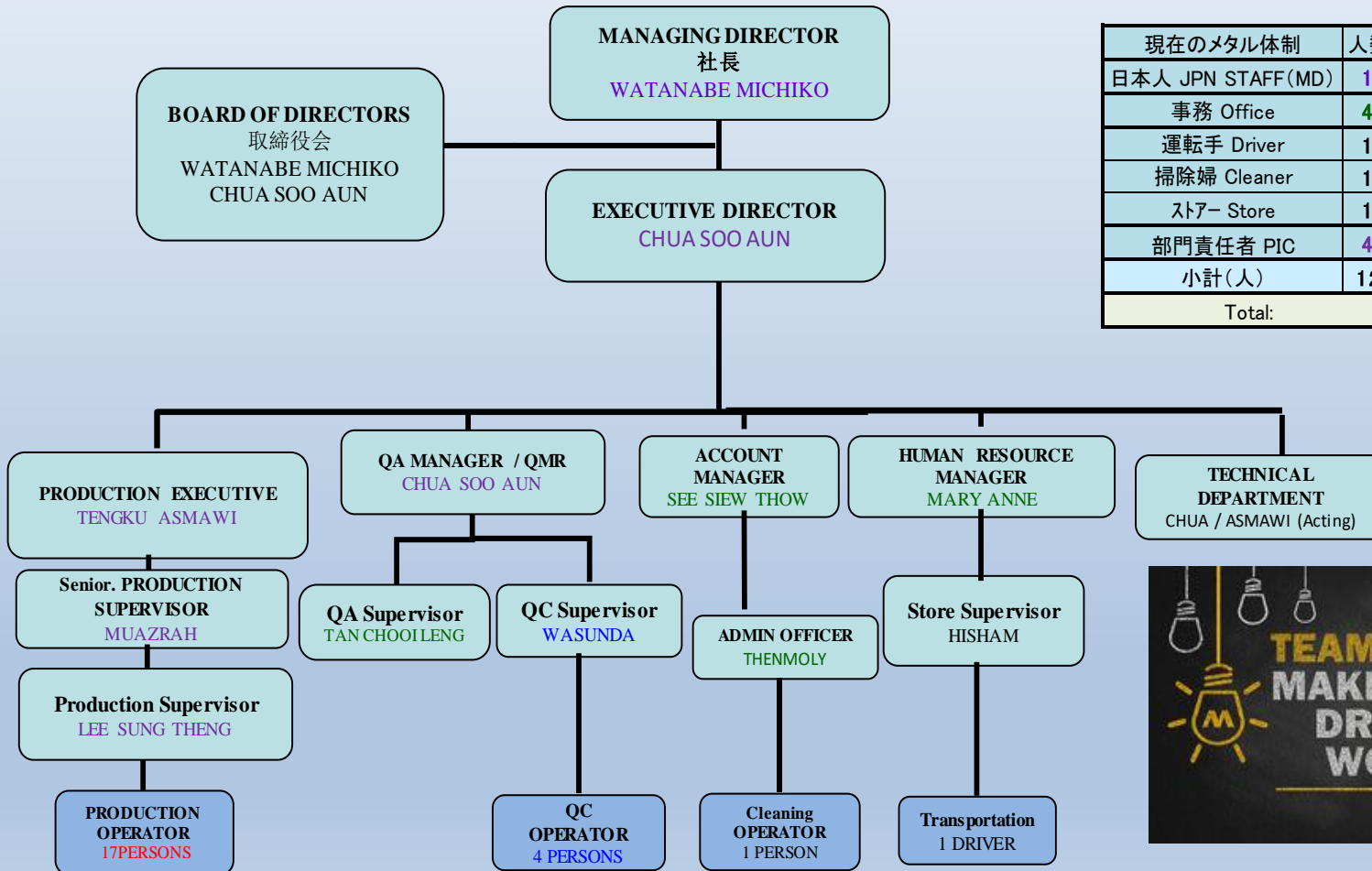


- **Company will always ensure safe working environment for all its visitors, contractors and workers.**
  - Syarikat menjamin dan akan sentiasa memastikan kesemua pelawat, kontraktor dan pekerja berada dalam suasana kerja yang selamat dan sihat.
- **Company will educate all its workers by providing enough training on safety and health.**
  - Syarikat akan menyediakan latihan yang secukupnya bagi kesemua para pekerjanya mengenai keselamatan dan kesihatan.
- **Company will ensure that the entire machines are always in safe and clean order.**
  - Syarikat akan memastikan segala mesin-mesin yang sentiasa dalam keadaan selamat dan bersih untuk digunakan.
- **Company will provide all the necessary safety equipments needed by its workers to perform better and safer work thus increasing the company's productivity.**
  - Syarikat akan menyediakan segala alat-alat keselamatan yang diperlukan oleh pekerja untuk menjalankan kerja mereka dengan lebih selamat dan secara langsung meningkatkan produktiviti syarikat.

渡辺 みち子  
Watanabe Michiko  
(Managing Director)

# WATANABE METAL IND SDN BHD

## ORGANISATION CHART



現在のメタル体制	人数	現在のメタル体制	人数
日本人 JPN STAFF (MD)	1	QC	3
事務 Office	4	整形 (revise)	1
運転手 Driver	1	脱脂&バレル MC&Barrel	2
掃除婦 Cleaner	1	タップ Tapping	1
ストア- Store	1	熔接 Spot	2
部門責任者 PIC	4	プレス Press	12
小計(人)	12	小計(人)	21
Total:		合計(人)	33

DOC NO WMISB-QM

Approve by:  
*Mdm WATANABE*

Organize / Make by:  
*S.A. Chua*

2022-OCT



**UTAMAKAN  
KESELAMATAN!**



**WATANABE METAL INDUSTRIES SDN. BHD.**

235140-D

**SAFETY & HEALTH COMMITTEE ORGANISATION CHART**

**CHAIRMAN**  
CHUA SOO AUN



**SECRETARY**  
MARY ANNE



**EMPLOYER'S REPRESENTATIVE**

< HISHAM  
TENGGU ASMAWI >



**EMPLOYEE'S REPRESENTATIVE**

M.MUAZRAH MUSA (Production Dept)  
WASUNDA (Q.C Dept)



**HEALTH  
AND  
SAFETY  
COMES  
FIRST**



**SAFETY  
FIRST**

**SAFETY  
BEGINS WITH  
TEAMWORK**



Small text at the bottom of the icon

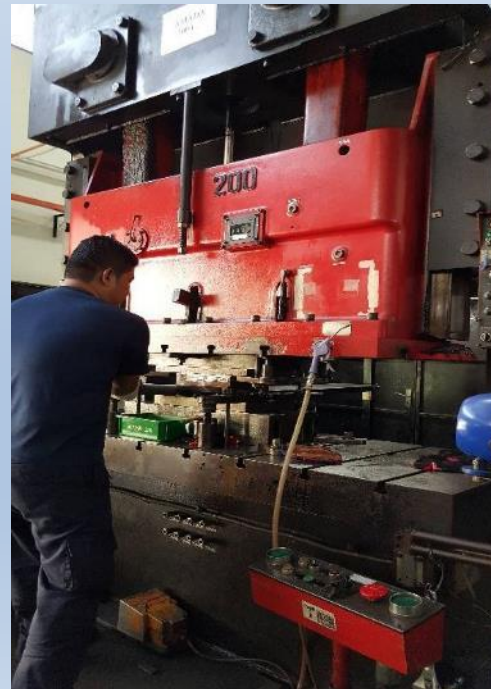
Revised on 21/4/2022

Certified & Approved By : **S.A.CHUA**

**CHUA SOO AUN**  
**CHAIRMAN OF THE SAFETY & HEALTH COMMITTEE**

- DOC NO: WMISB-RC-1012

# PRODUCTION DEPARTMENT



## MACHINES LIST

AMADA 200T	1 unit
Li Chin 110T	1 unit
KOMATSU 200T	1 unit
AMADA 80 T	2 units
KOMATSU 80T	1 unit
KOMATSU 60T	2 units
KOMATSU 45T	2 units
KOMATSU 35 T	1 unit
Li Chin 80 T (2022)	1 unit
AMADA 30T	1 unit
KOMATSU 80T/FEEDER	1 unit



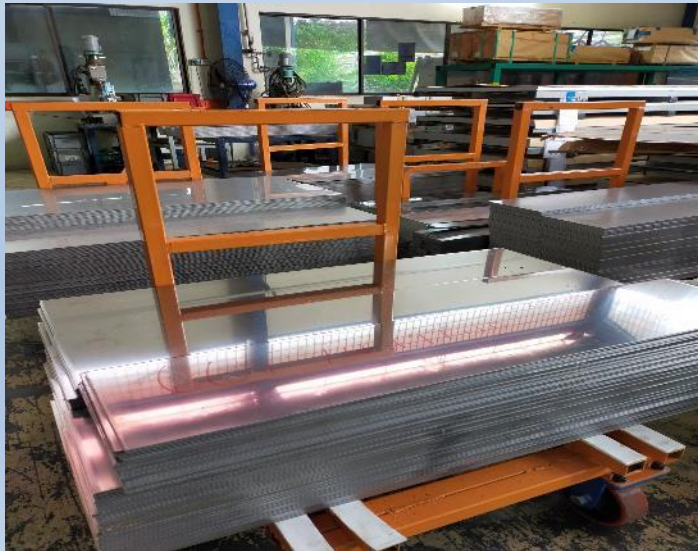
# SHEARING DEPT



SHEARING MACHINE = 1unit

MAX CUTTING > STAINLESS STEEL = t= 4.0 mm  
> IRON PLATE = t= 6.0 mm

MIN CUTTING > t= 0.8 MM



# SPOT WELDING & TAPPING DEPT



- >PANASONIC WELDING MACHINE 35KW 2 UNITs
- >PANASONIC WELDING MACHINE 50KW 1 UNIT
- >NAS TOA WELDING MACHINE 35KW 2 UNITs
- >YAJIMA NUT FEEDER 1 UNIT
- >TOYO TAPPING MACHINE 1 UNIT

# BARREL & DECREASING DEPARTMENT



BARREL MACHINE  
2 UNITS



DECREASING PROCESS

# TECHNICAL DEPARTMENT



- >OKAMOTO POLISH MACHINE 1UNIT
- >WASHINO CENTER LATHE MACHINE 1UNIT
- >KIRA DRILLING MACHINE 1UNIT
- >ENSHU NC MILLING 1UNIT
- >ENSHU MILLING 1UNIT
- >AMADA WIRECUTTING MACHINE 1UNIT

# MOULD STORAGE AREA



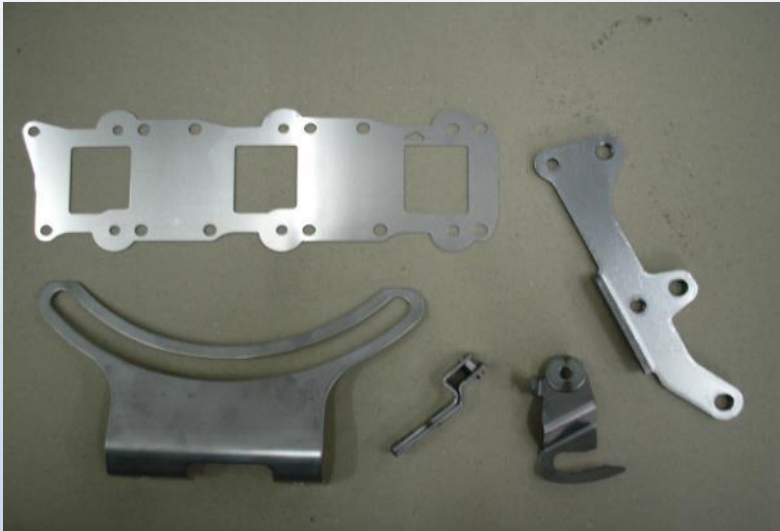
# SHIPPING / STORE DEPARTMENT



## Raw Material Storage Area



# OUR PRODUCTS



**PRODUCT WE PRODUCE : Hanger Engine, Lever Clamp , Bracket, Choke, Hook , Plate , Washer, Handle Gear Shift ,Stay & etc.**

# QUALITY CONTROL DEPARTMENT



**100% INSPECTION**



# PROVIDING HIGH QUALITY PRODUCTS IS OUR BEST BUSINESS PLAN.



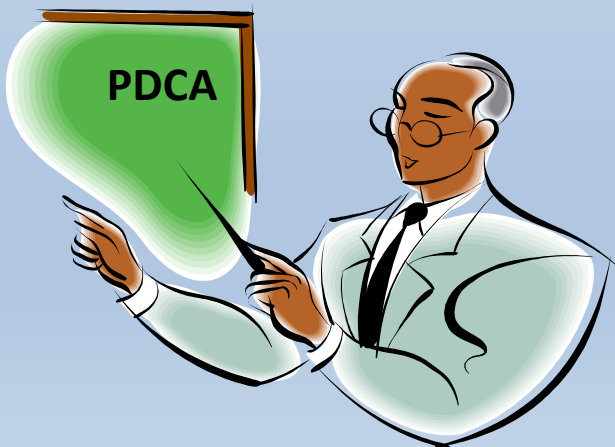
MITUTOYO CMM MACHINE  
1 UNIT



# OUR MAIN PRIORITY



## SAFETY – KAIZEN – COMMITMENT TO QUALITY – ON TIME DELIVERY – CONTINUOUS IMPROVEMENT



# OUR ACHIEVEMENT



The Best Practices and Implementation of Program Safety and Health "SOHELP DIY" Under Category SME, Awarded By The Deputy Minister of Human Resources Malaysia In Year 2022.

